

Phase-interval controlled pushdimmer IBDA 600-0 for DIN rail cabinets



The ALTODIM 600-0 is a plug-in module for DIN rail cabinets. If it receives EIB-telegrams it would control the connected load in a phase-interval control mode from 0 to maximum of the brightness.

The device is suitable for the control of incandescent lamps as well as low-voltage halogen lamps with electronic transformers with the load capacities between 40 and 600 W/VA.

Conventional, wire-wound transformers or inductive loads may not be connected. The load output has an electronic current limiting, a light level reduction in case of an exceeding of a limit temperature and a switch-OFF function at inadmissible high temperatures. As soon as the temperature is cooled down the ALTODIM switches ON again after the functional switch-OFF mode.

Additionally the control has an input for common pushbuttons (230 V ~). This input can be used as an independent EIB-push-sensor. Several pushbuttons can be operated in parallel.



Bestell-Nr.: 80.13.061

Description of the component functions as they are pre-adjusted in the data base:

After receipt of a „1“-telegram (object 0) the brightness jumps to that value which was set before the switch “OFF” function. A Status back indication would not be set.

The brightness can be dimmed via object 1 and 2 within a range of 0% and 100%. For this procedure the dimmer requires approx. 3,2 sec. If the dimmer is switched „OFF“ the switch „ON“ function applies if the command dimming brighter of object 1 as well as with a value of object 2 is switched “ON”. The pushbutton input of the dimmer is pre-adjusted for the 1-push-switch/dim function. At a short touch of the pushbutton (< 400 ms) switch commands are being send (object 3), while at a longer pressing of the pushbutton (> 400 ms) dimmer commands (object 4) are being sent.

At a voltage return the brightness goes to the same level as before the voltage failure and the pushbutton input is kept synchronous to this value.

ETS – Search path

Product family	:	Lighting
Product type	:	Dimmer
Characterization	:	1 – pushbutton – dimmer, version 1.4

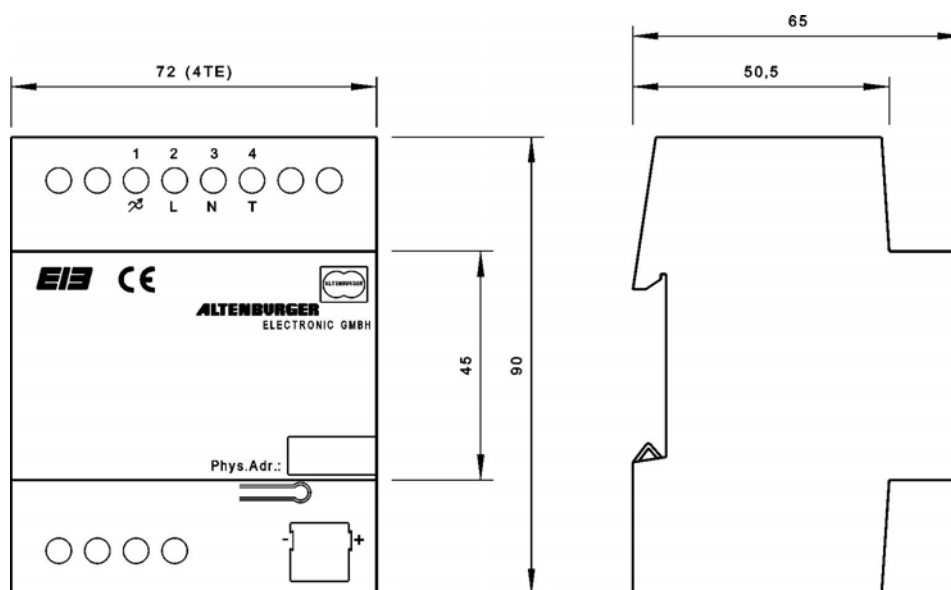
Phase-interval controlled pushdimmer IBDA 600-0 for DIN rail cabinets



Technical data IBDA 600-0

Typ	: IBDA 600-0
Order-No.	: 80.13.061
EIB supply	
Voltage	: 24V DC (+6 / -4V)
Input	: max. 180mW at 29 V DC
External supply	
Voltage	: 250V~ 50Hz
Own consumption	: <2% of the connected load
Output	
Load exit	: max. 600W/VA, 2,6A~ - electronic current limiting (starting current, overload / short-circuit current) - dimming to a lower level in case of the exceeding of a maximum temperature - switch-OFF function at a non-permissible high temperature, switching-ON again after the cooling down (functional switch OFF)
Minimum load	: 40W
Noise	: <25dB(A) at nominal load in a distance of 1m
Ambient temperature	: 0°C to +45°C, natural cooling at vertical mounting
Cross section of a line	: 0,5-2,5mm ² , wire or litz wire with sleeve
Wire lenght	: max. 100m for load and supply wires (1,5mm ²)
Mounting	: snap-on on DIN rails (4TE)
Dimension	: (W x H x D) 72 x 90 x 64mm
Weight	: approx. 220g
Protective type	: IP20
Protective class	: II (Protective isolation, at IEC 664, 10/92)
Demands	: EMV fulfilled at EN 61547 4/96 Low voltage fulfilled at IEC 669-2-1 11/94
Guarantee	: 24 month

Measures:



Phase-interval controlled pushdimmer IBDA 600-0 for DIN rail cabinets



Wiring diagram:

